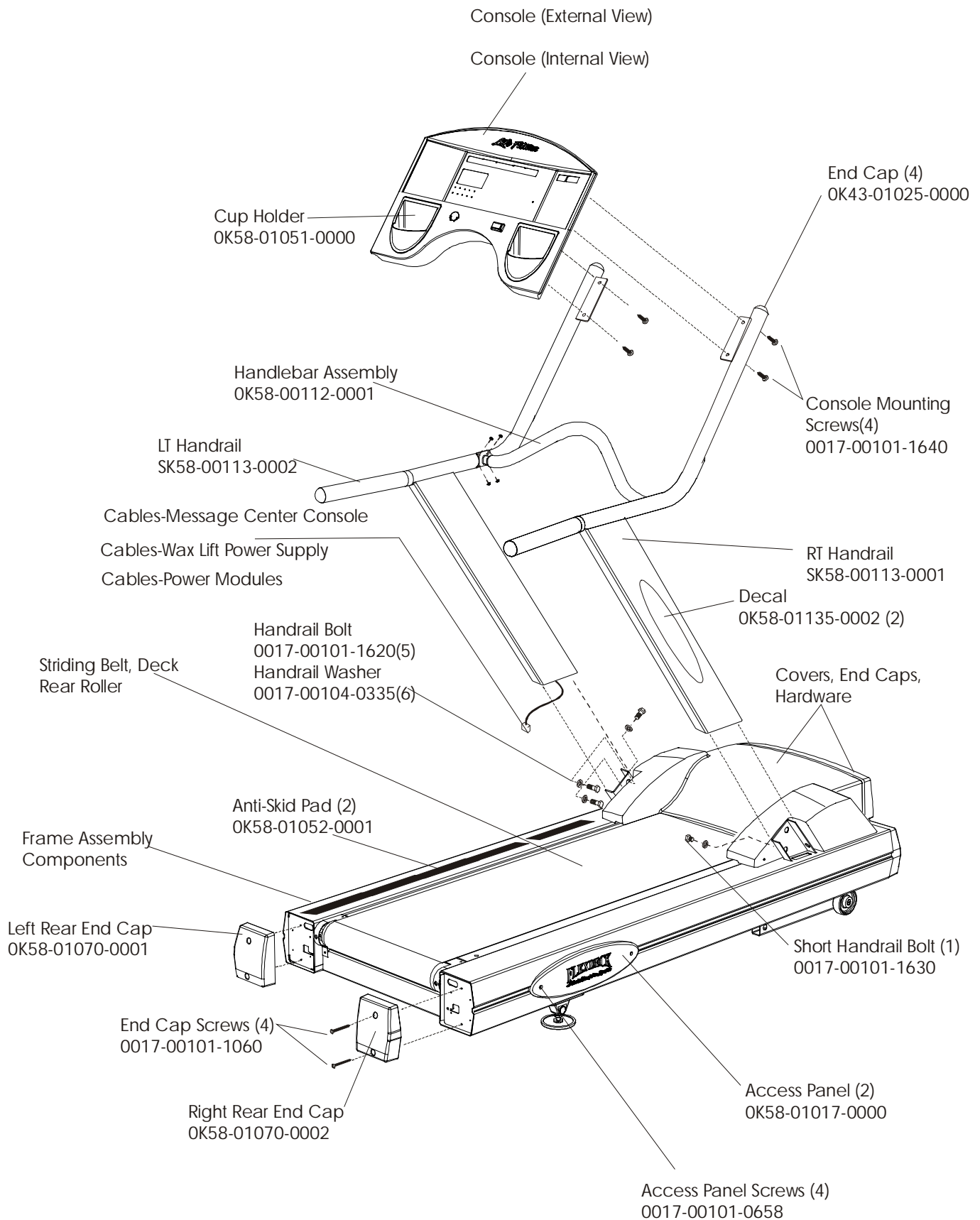


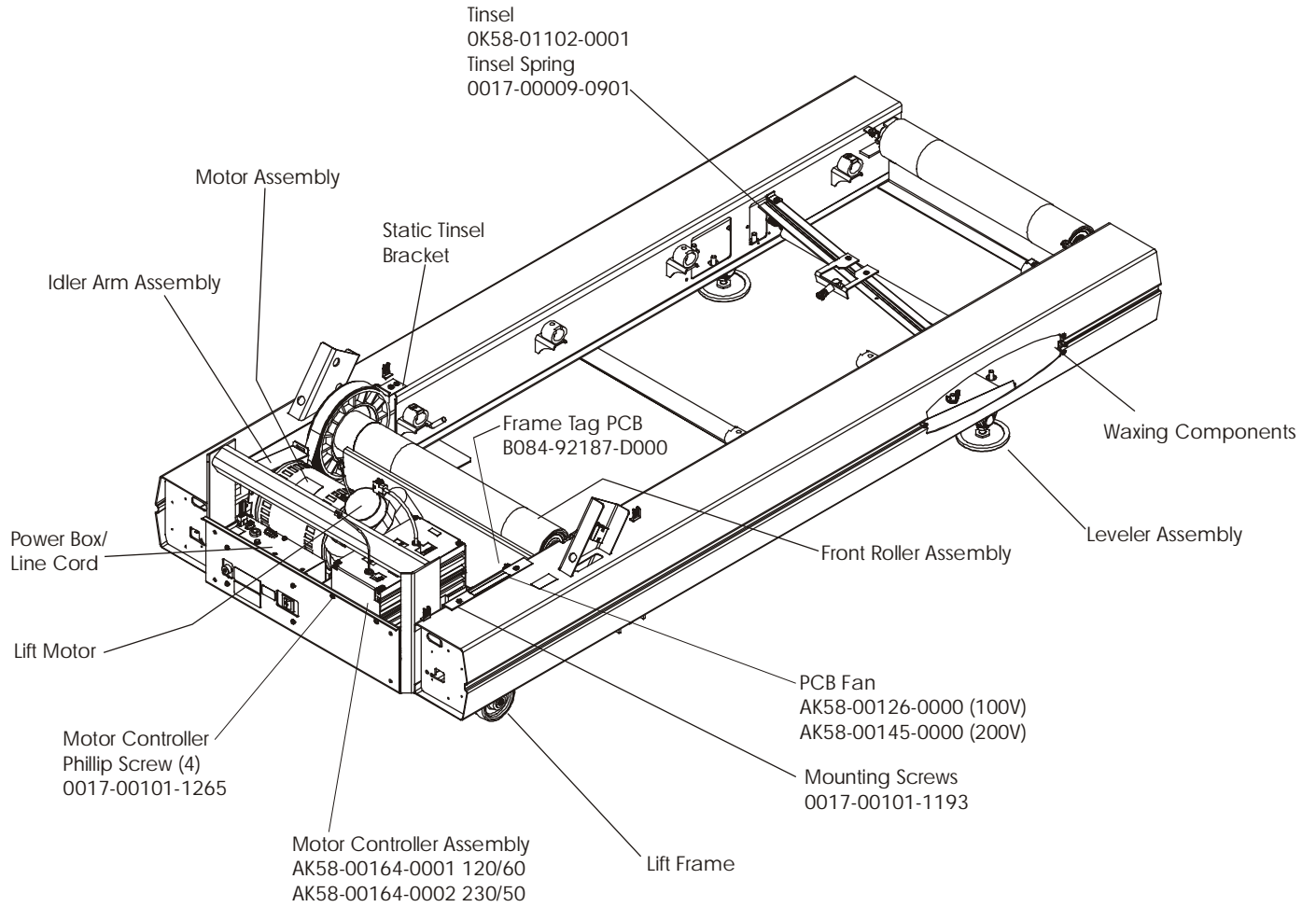
TR91 Treadmill
General Assembly

TR91-0100-35
S/N HTN100000



TR91 Treadmill
Frame Assembly Components

TR91-0100-35
S/N HTN100000

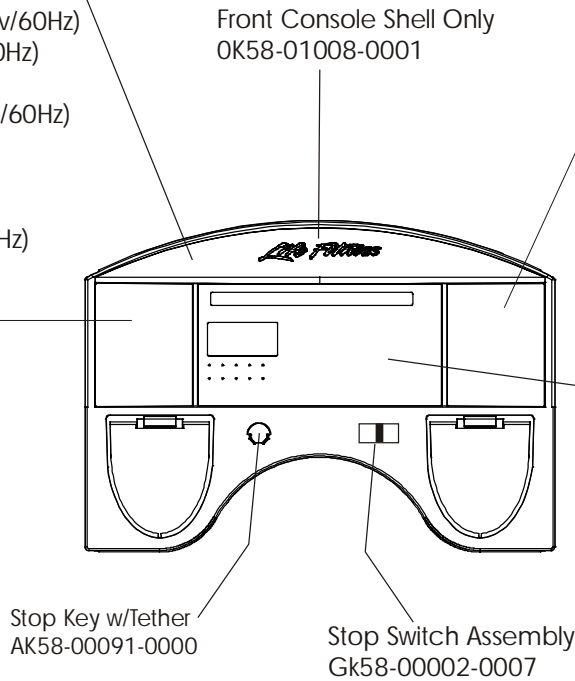


**TR91 Treadmill
Console (External View)**

**TR91-0100-35
S/N HTN100000**

- Console Assembly
- AK58-00057-0001 Eng/Met
- AK58-00057-0003 Ger/Met
- AK58-00057-0004 Spn/Met/Eur (120v/60Hz)
- AK58-00057-0005 Spn/Met (230v/50Hz)
- AK58-00057-0006 Jap/Met
- AK58-00057-0007 Frn/Met/Eur (120v/60Hz)
- AK58-00057-0008 Itl/Met
- AK58-00057-0009 Dut/Met
- AK58-00057-0010 Por/Met
- AK58-00057-0011 Frn/Met (230v/50Hz)

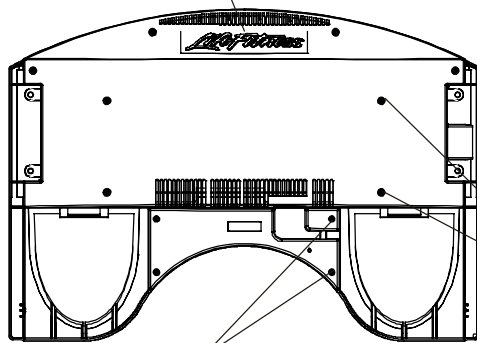
- Workout Profiles
- OK58-01210-0001 Eng/Met
- OK58-01210-0003 Ger/Met
- OK58-01210-0004 Spn/Met/Eur
- OK58-01210-0006 Jap/Met
- OK58-01210-0007 Frn/Met/Eur
- OK58-01210-0008 Itl/Met
- OK58-01210-0009 Por/Met
- OK58-01210-0010 Dut/Met



- Zone Training Overlay
- OK58-01209-0001 Eng/Met
- OK58-01209-0003 Ger/Met
- OK58-01209-0004 Spn/Met/Eur
- OK58-01209-0006 Jap/Met
- OK58-01209-0007 Frn/Met/Eur
- OK58-01209-0008 Itl/Met
- OK58-01209-0009 Por/Met
- OK58-01209-0010 Dut/Met

- Tray/Switch w/Overlay Assy
- AK58-00162-0001 Eng/Met
- AK58-00162-0003 Ger/Met
- AK58-00162-0004 Spn/Met/Eur
- AK58-00162-0006 Jap/Met
- AK58-00162-0007 Frn/Met/Eur
- AK58-00162-0008 Itl/Met
- AK58-00162-0009 Por/Met
- AK58-00162-0010 Dut/Met

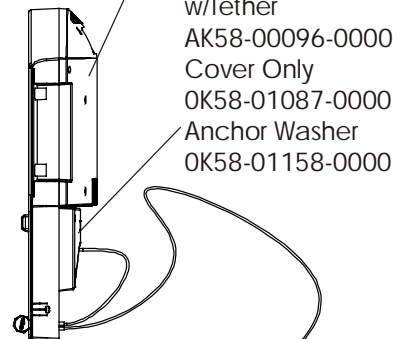
- Rear Console Decal
- OK58-01129-0000



- Phillips Screw-4
(8-32x6)
0017-00101-0776

- Phillips Screw-8
(10-32x8)
0017-00101-1288

- Rear Console
- OK58-01009-0000

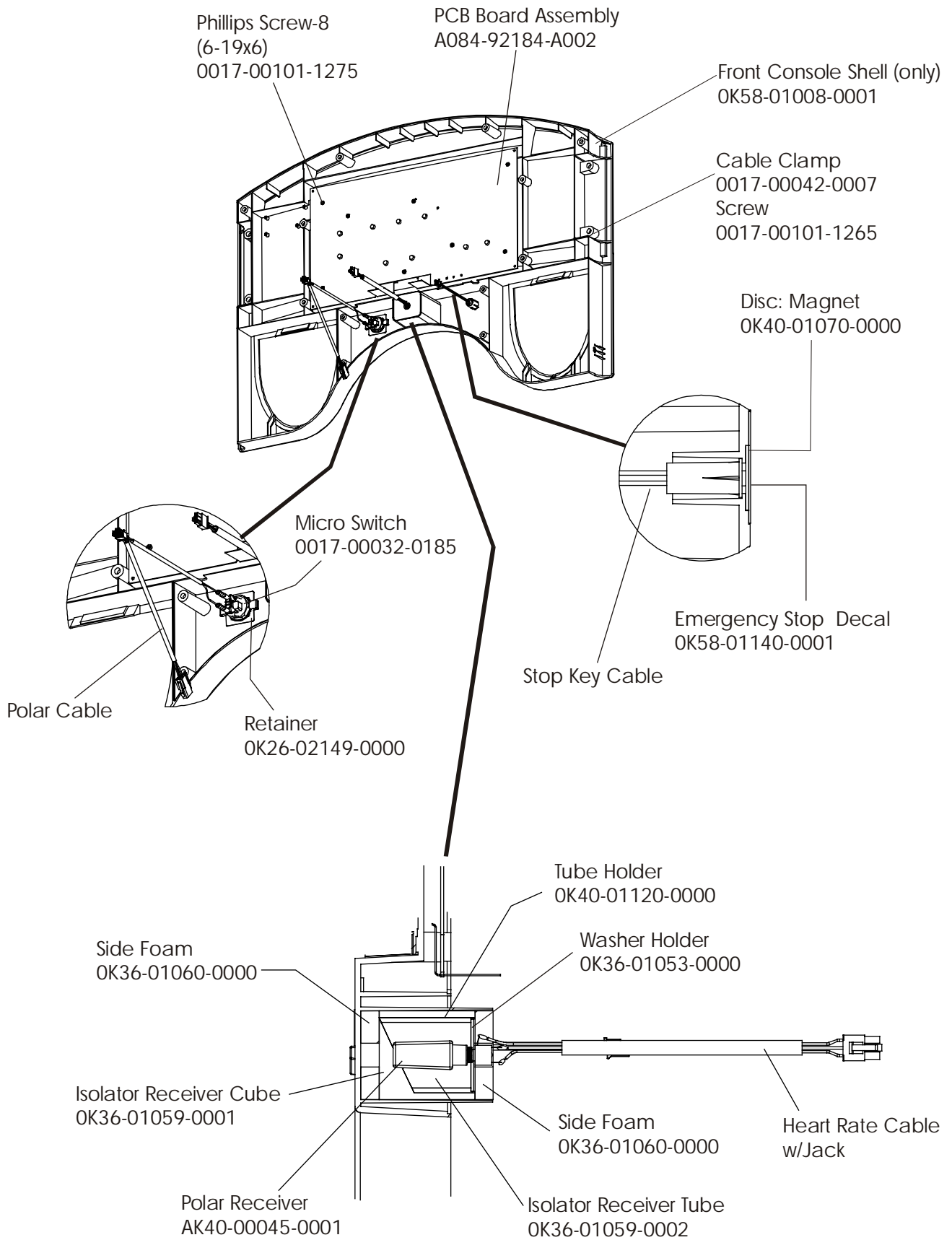


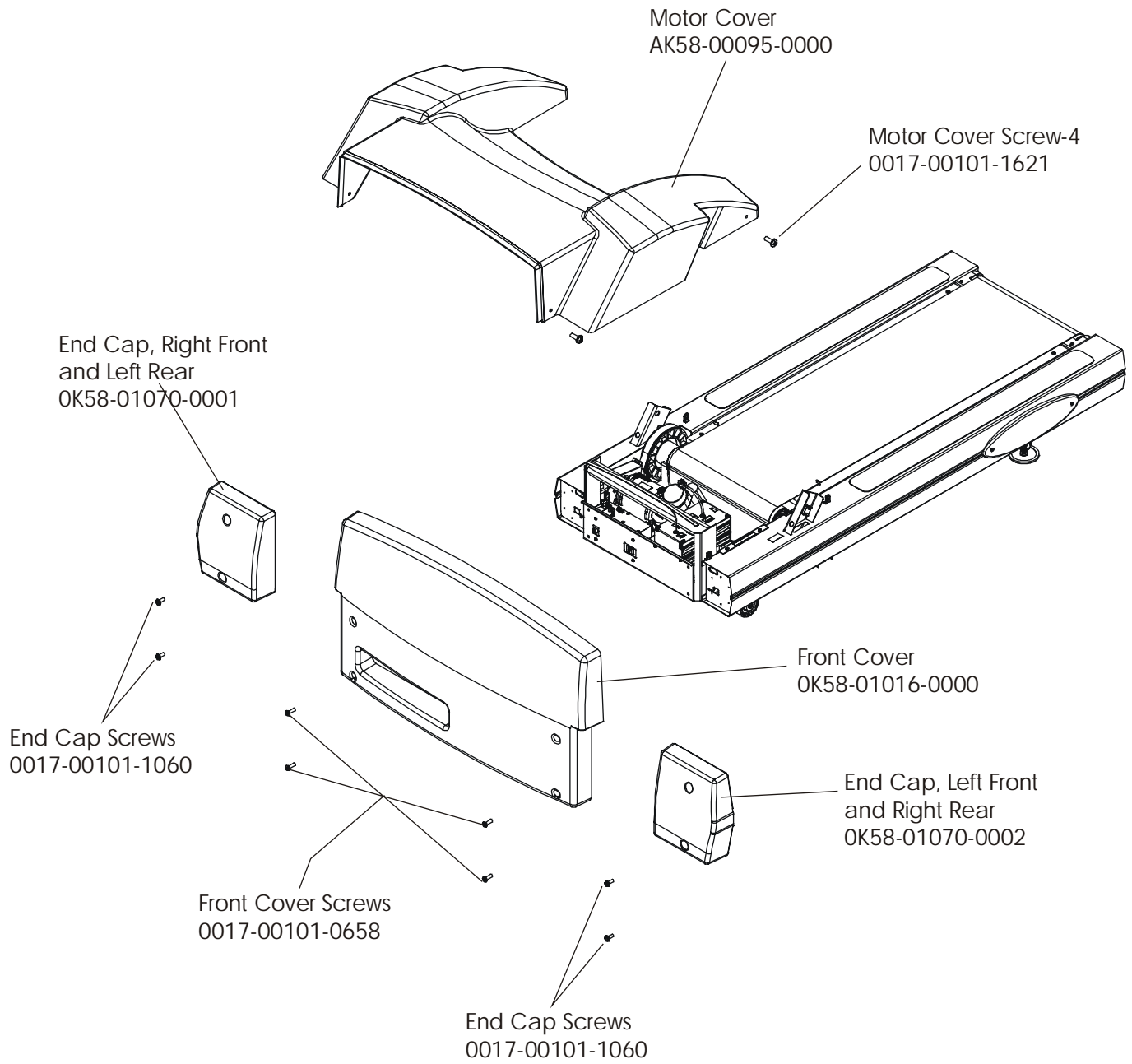
- Switch Cover
w/Tether
AK58-00096-0000
- Cover Only
OK58-01087-0000
- Anchor Washer
OK58-01158-0000

- Stop Key w/Tether
AK58-00091-0000

**TR91 Treadmill
Console (Internal View)**

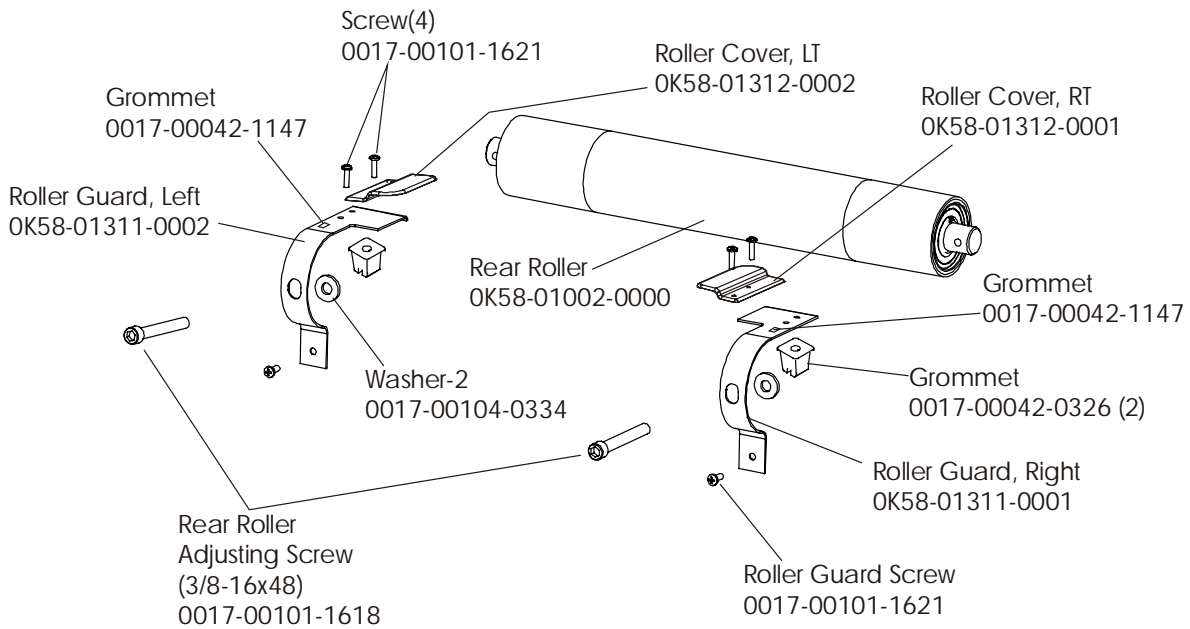
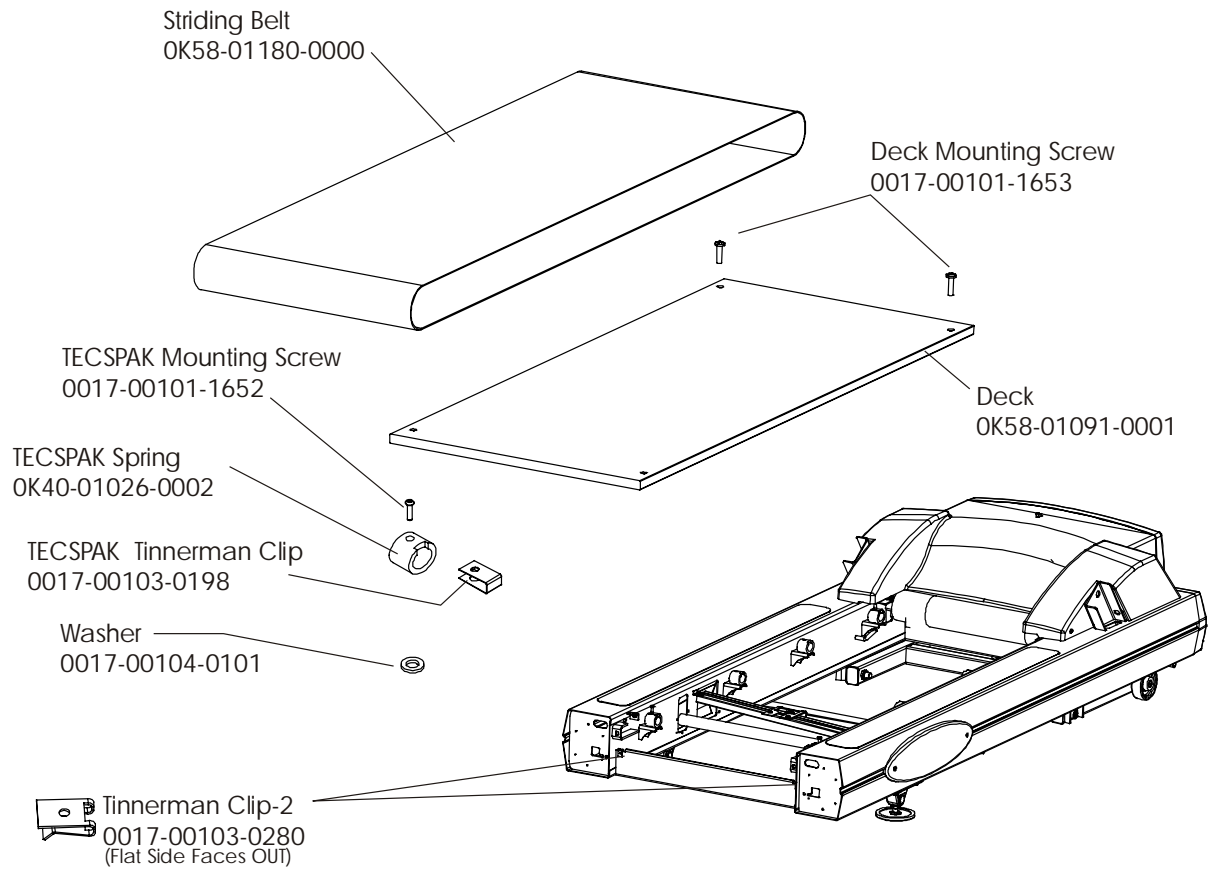
**TR91-0100-35
S/N HTN100000**





TR91 Treadmill
Belt, Deck, Rear Roller

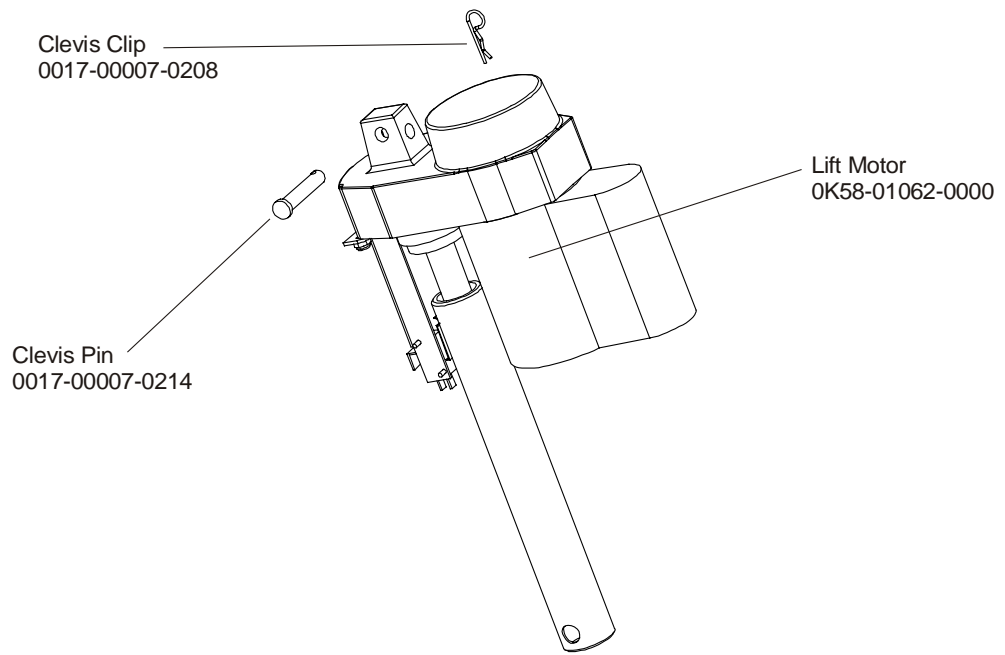
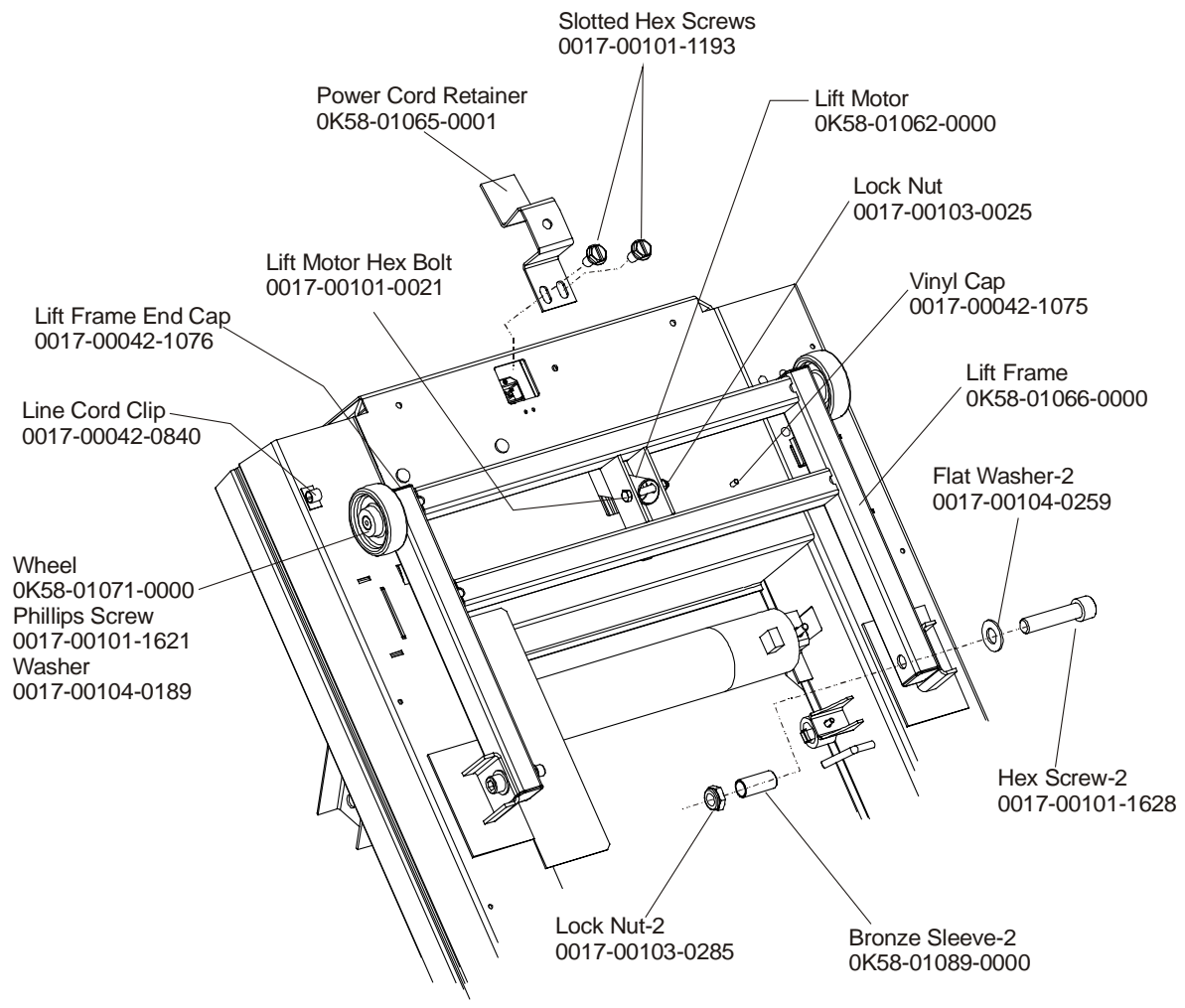
TR91-0100-35
S/N HTN100000



IMPORTANT: Components can be ordered separately with Serial Numbers above:
 TR9100 HTN102105-Above, TR9500 HTM105585-Above, and TR9700 HTP100531-Above.
 Use the appropriate Roller Guard Kit: GK58-00002-0056 for TR91/95, and GK58-00002-0057 for Tr97 with
 Serial Numbers: TR9100 HTN102105-Below, TR9500 HTM105585-Below, and TR9700 HTP100531-Below.

TR91 Treadmill
Lift Motor and Lift Frame

TR91-0100-35
S/N HTN100000

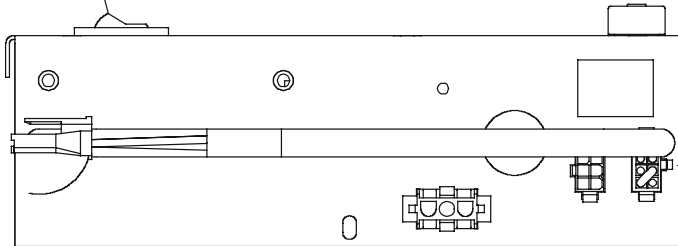


**TR91 Treadmill
Power Box Assembly**

**TR91-0100-35
S/N HTN100000**

ON/OFF Power Switch
0017-00032-0198

Circuit Breaker 3-AMP
0017-00003-0700



TOP VIEW

Transformer (EURO Only)
0017-00003-0905

Phillips Pan Head Screw
0017-00101-0162

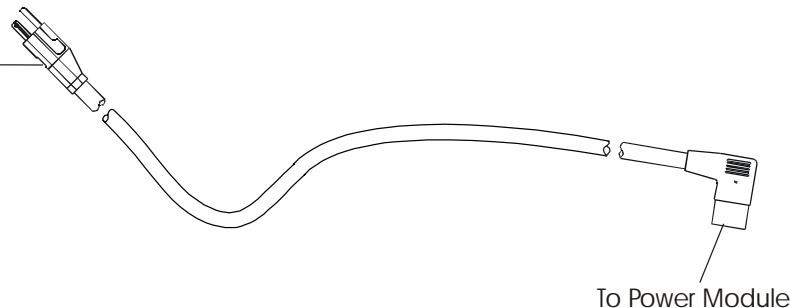
Phillips Pan Head Screw
0017-00101-1182

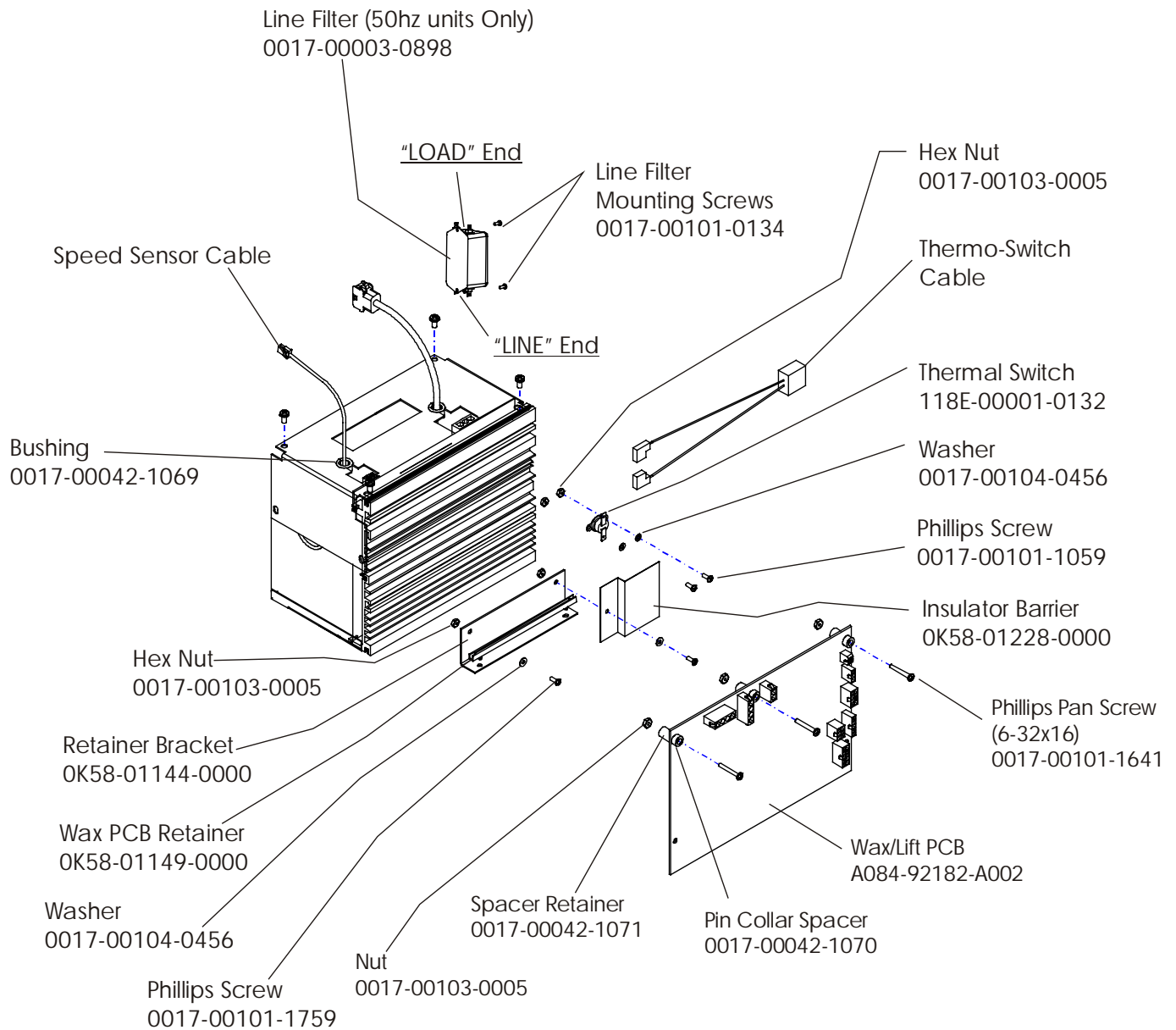
Transformer Bracket
OK58-00120-0004

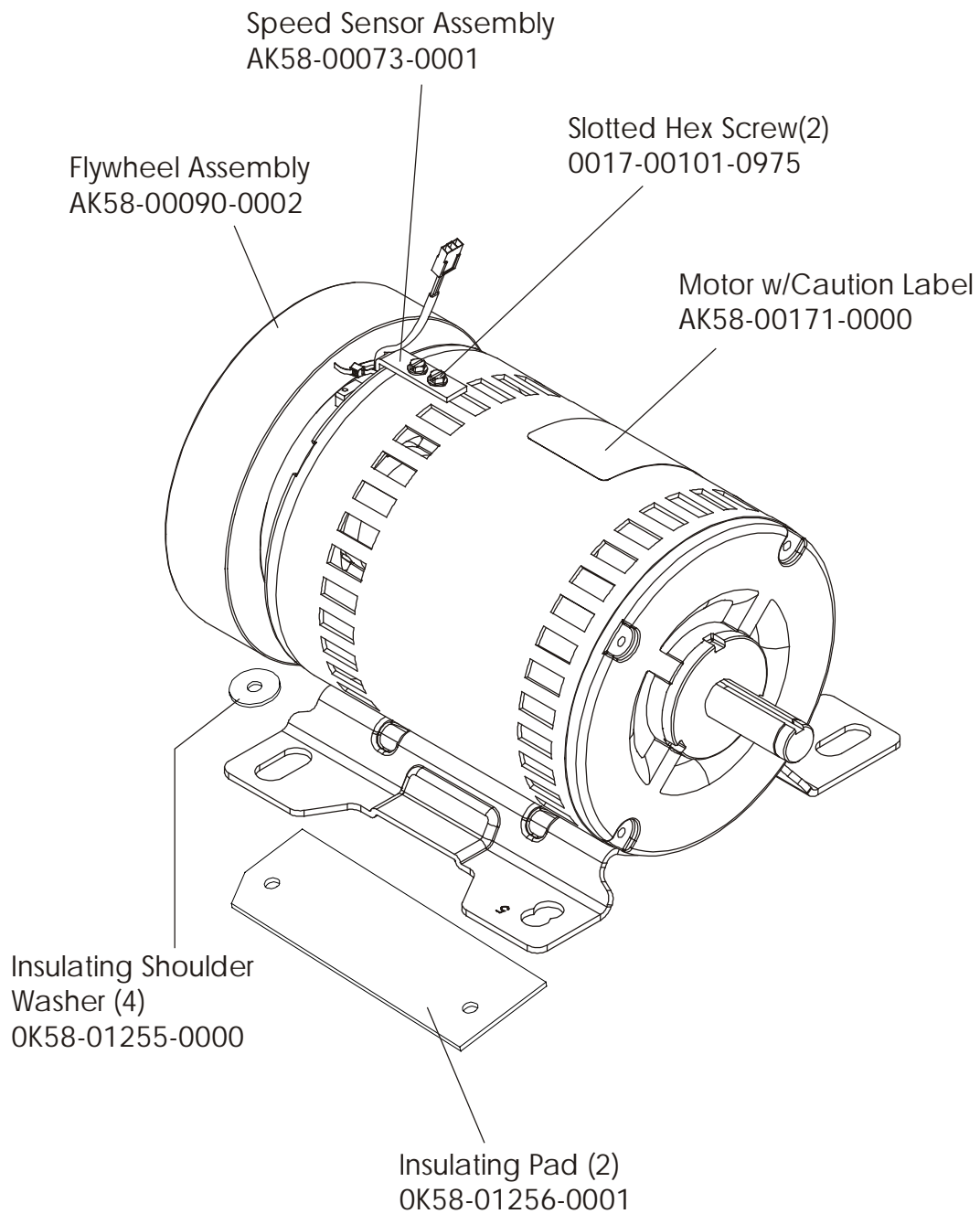
Jumper Line
AK58-00120-0004 - 240V
AK58-00120-0003 - 230V
AK58-00120-0002 - 200V
AK58-00120-0001 - 100V
AK58-00120-0000 - 120V

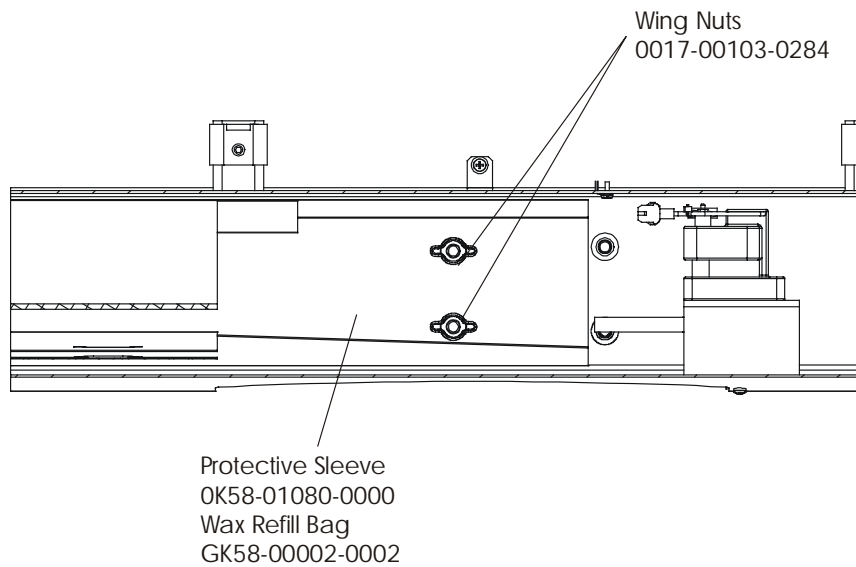
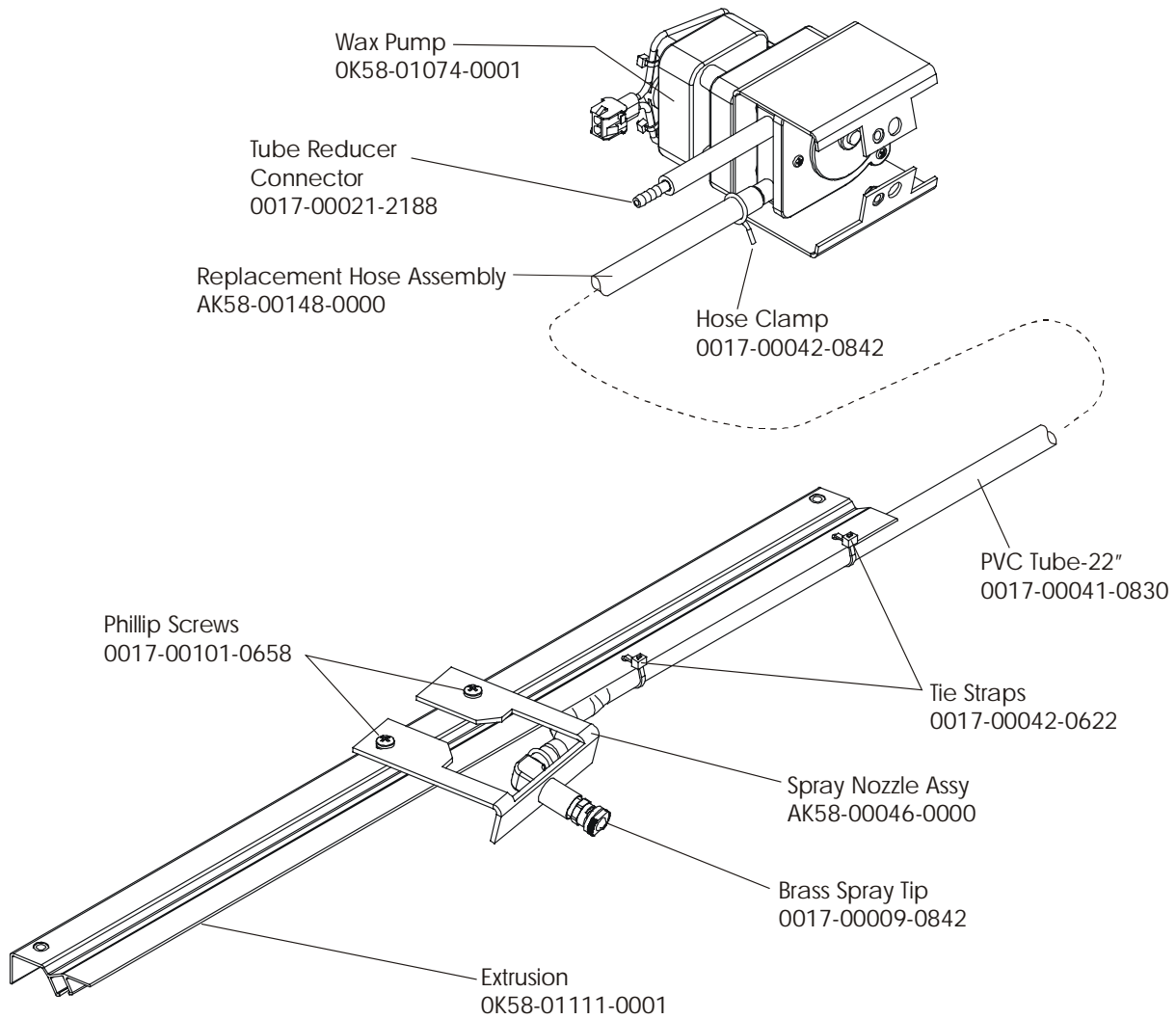
Power Box Assembly
AK58-00176-0000 - 120V
AK58-00183-0001 - 100V
AK58-00183-0002 - 230-240V/50Hz
AK58-00183-0003 - 200V
AK58-00183-0004 - 220V/60Hz (230/50 UK)
AK58-00183-0005 - 240V+ Continental

Line Cord
(Plug End Changes)
0017-00003-0947 12' 120v Line Cord
0017-00003-0923 Domestic
0017-00003-0948 12' 220v Line Cord
0017-00003-0915 RT Angle Plug
0017-00003-0781 220v/60Hz
0017-00003-0696 Continental
0017-00003-0890 UK



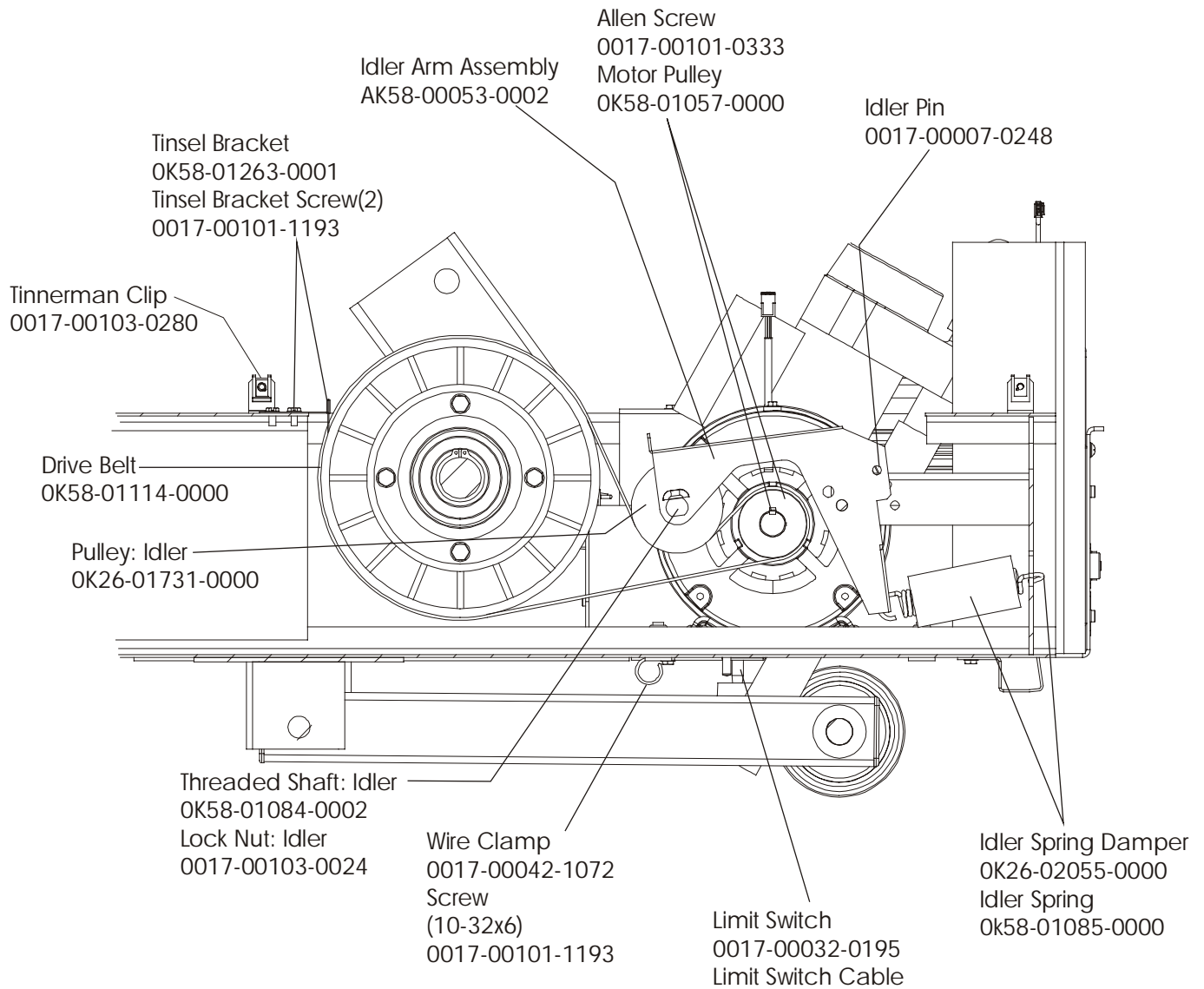


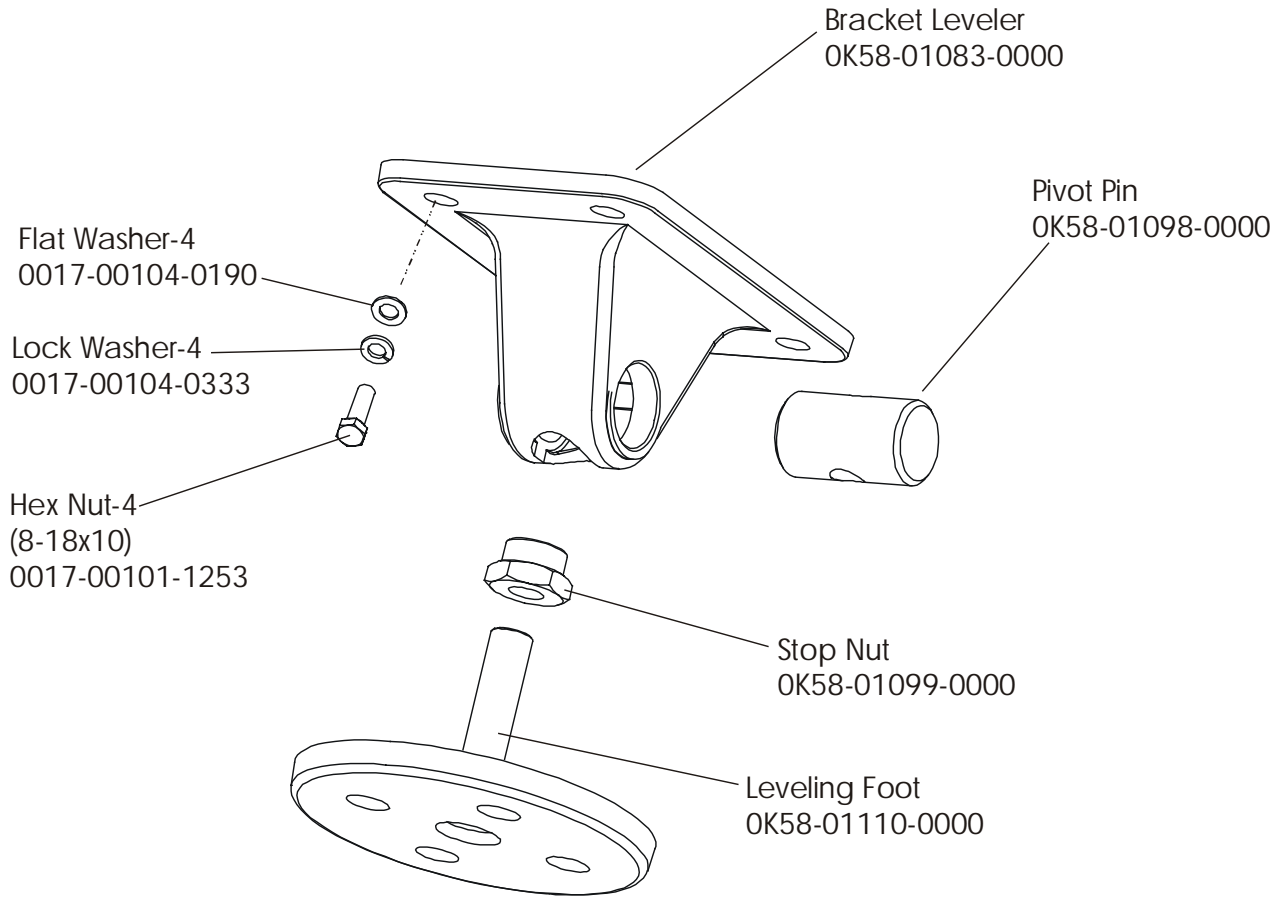




**TR91 Treadmill
Idler Arm Assembly**

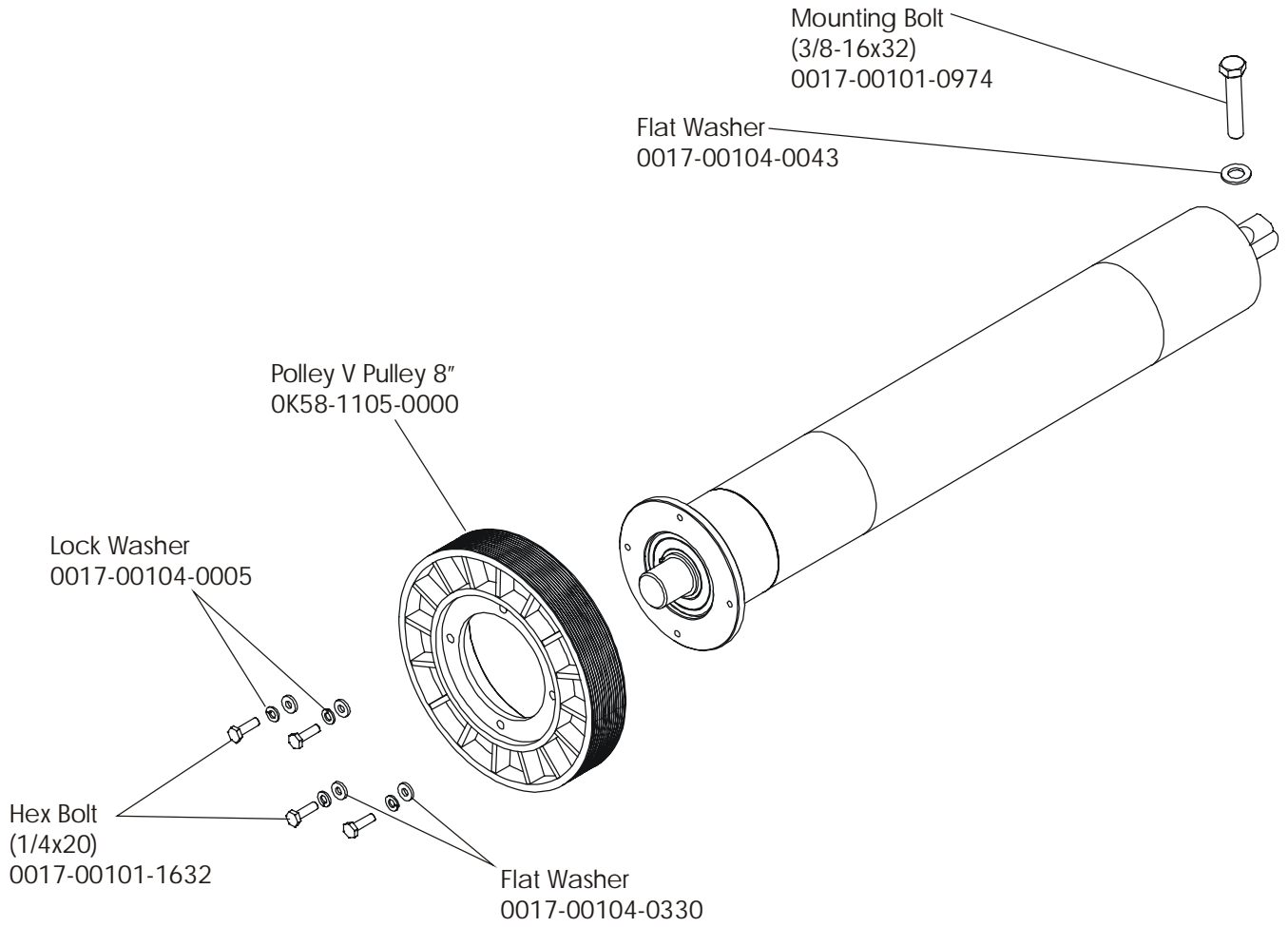
**TR91-0100-35
S/N HTN100000**

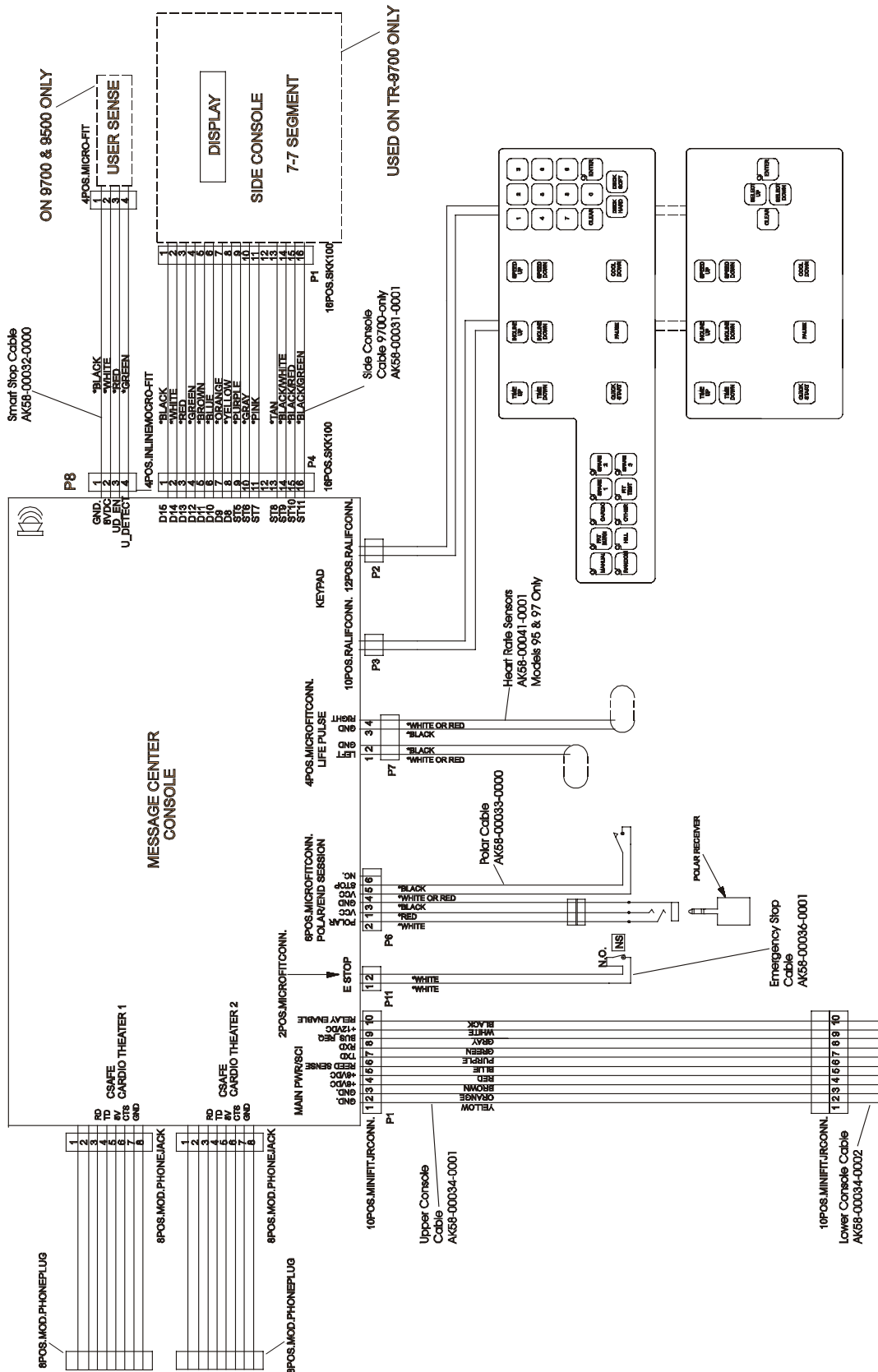




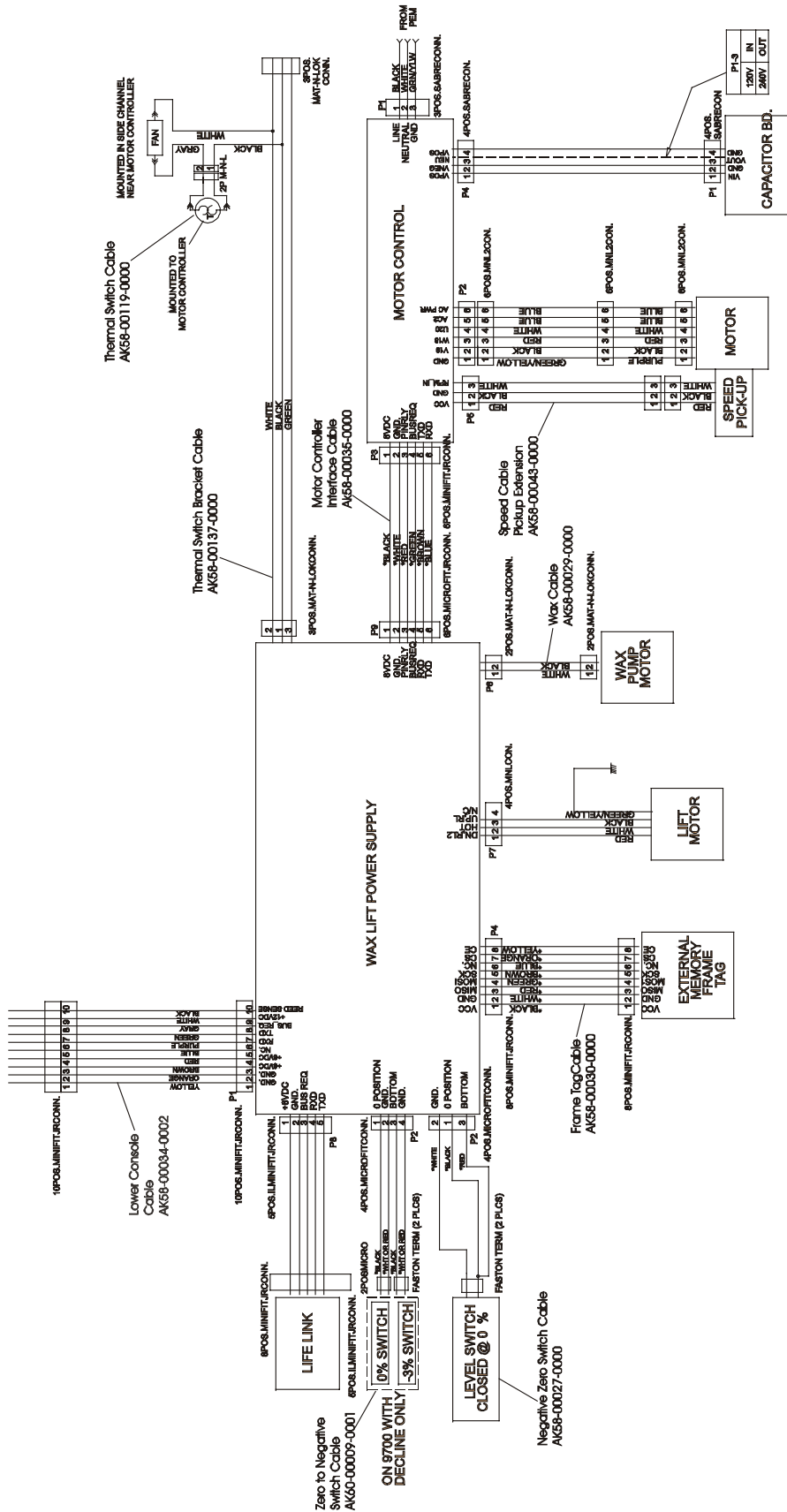
TR91 Treadmill
Front Roller Assembly – AK58-00066-0000

TR91-0100-35
S/N HTN100000

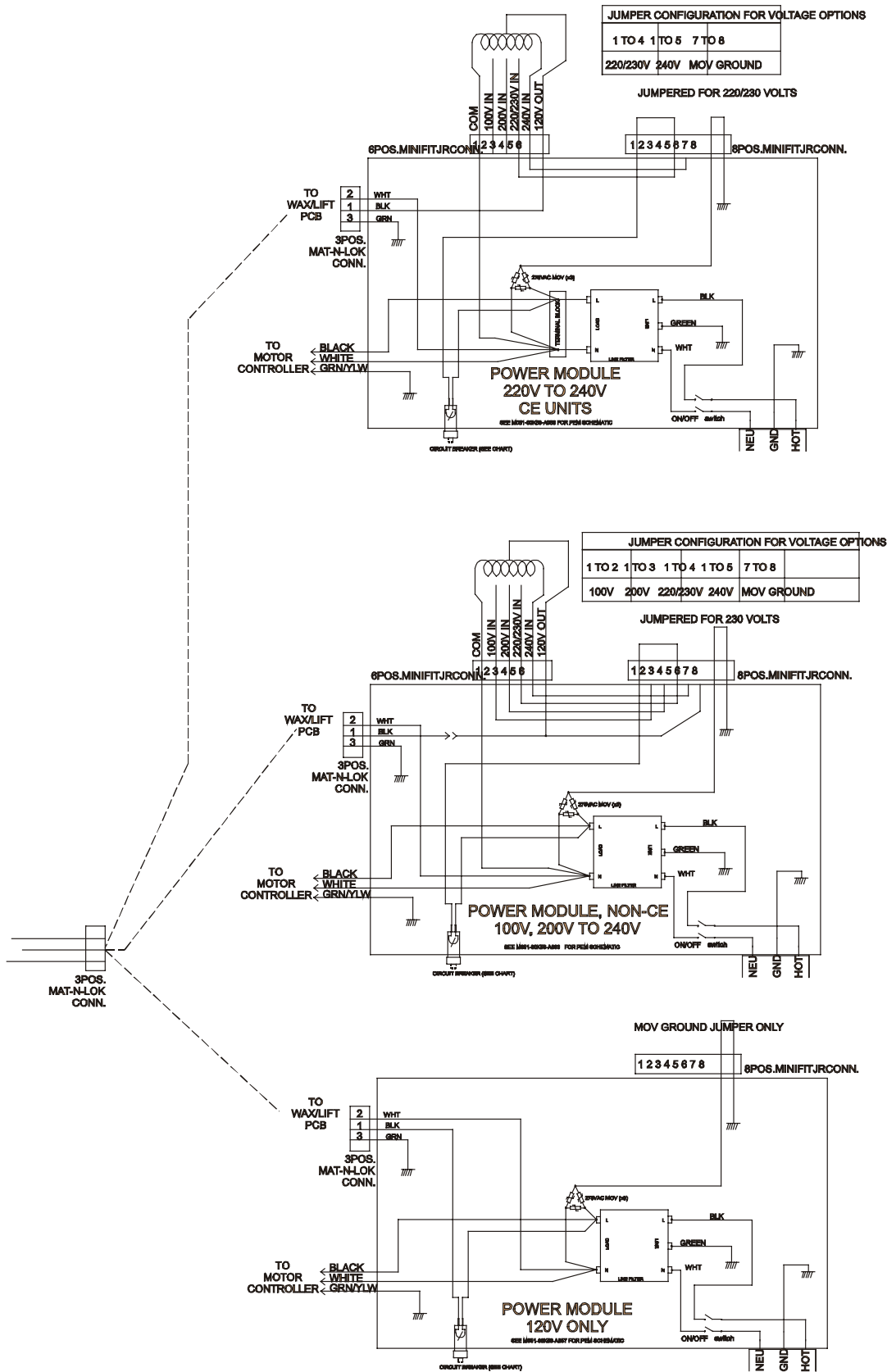




Message Center Console



WAX LIFT POWER SUPPLY



Power Modules